



Marine Conservation in Wales

Friends of Cardigan Bay

Lewis Winks

Friends of Cardigan Bay

Aims:

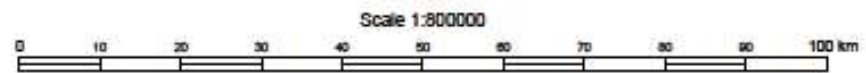
- To conserve and improve the quality of the environment of Cardigan Bay for all life.
- To increase public awareness of threats to the Bay and its inhabitants.
- To work with other organisations in monitoring and campaigning for protection.

Fig. 6.1 Location Map



© Crown copyright/database right 2008. An Ordnance Survey/EDINA supplied service

EDINA²
Digimap²
EDINA National Data Centre
University of Edinburgh
Causeswayside House
185 Causeswayside
Edinburgh
EH8 1PR
UK

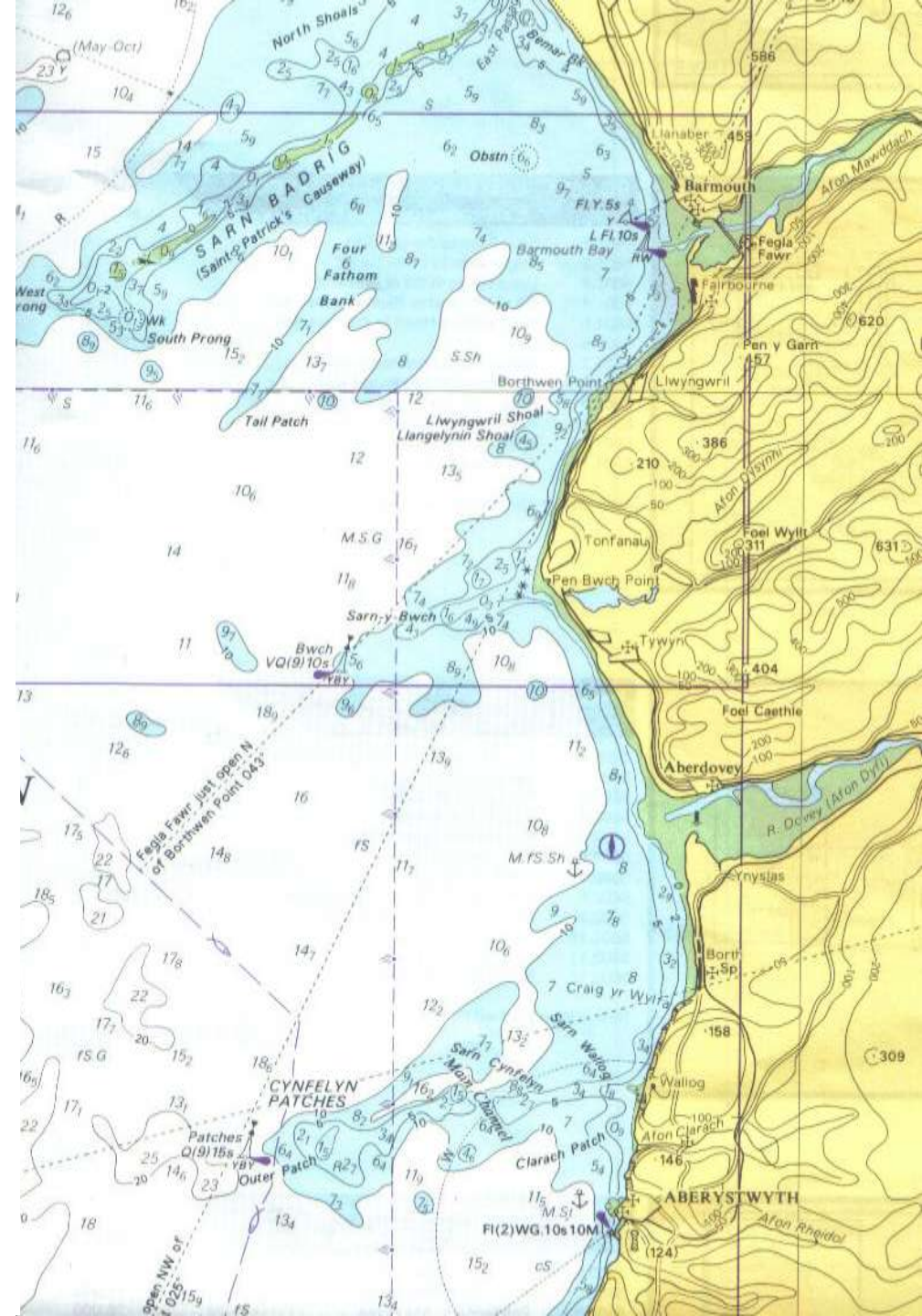
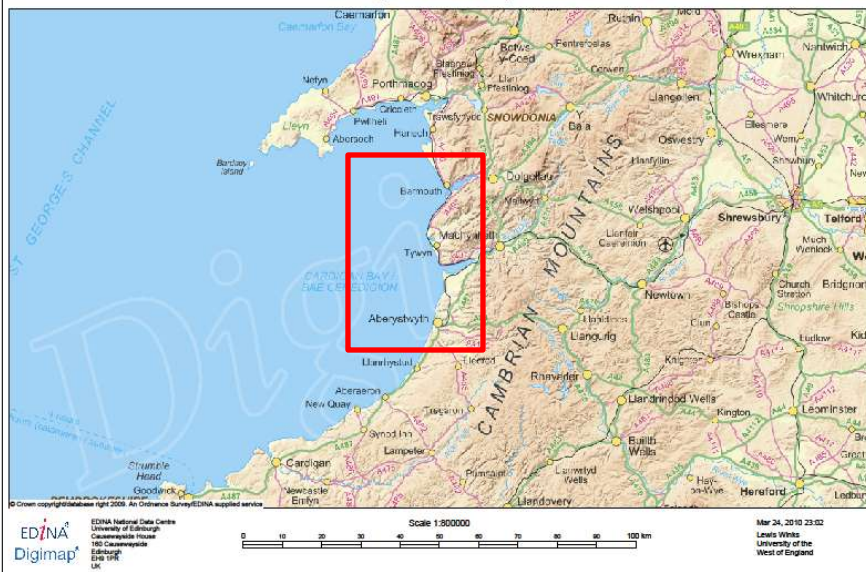


Mar 24, 2010 23:02
Lewis Winks
University of the
West of England

The Three Sarnau of Cardigan Bay

Reproduced with permission of Her Majesty's Hydrographical Office.

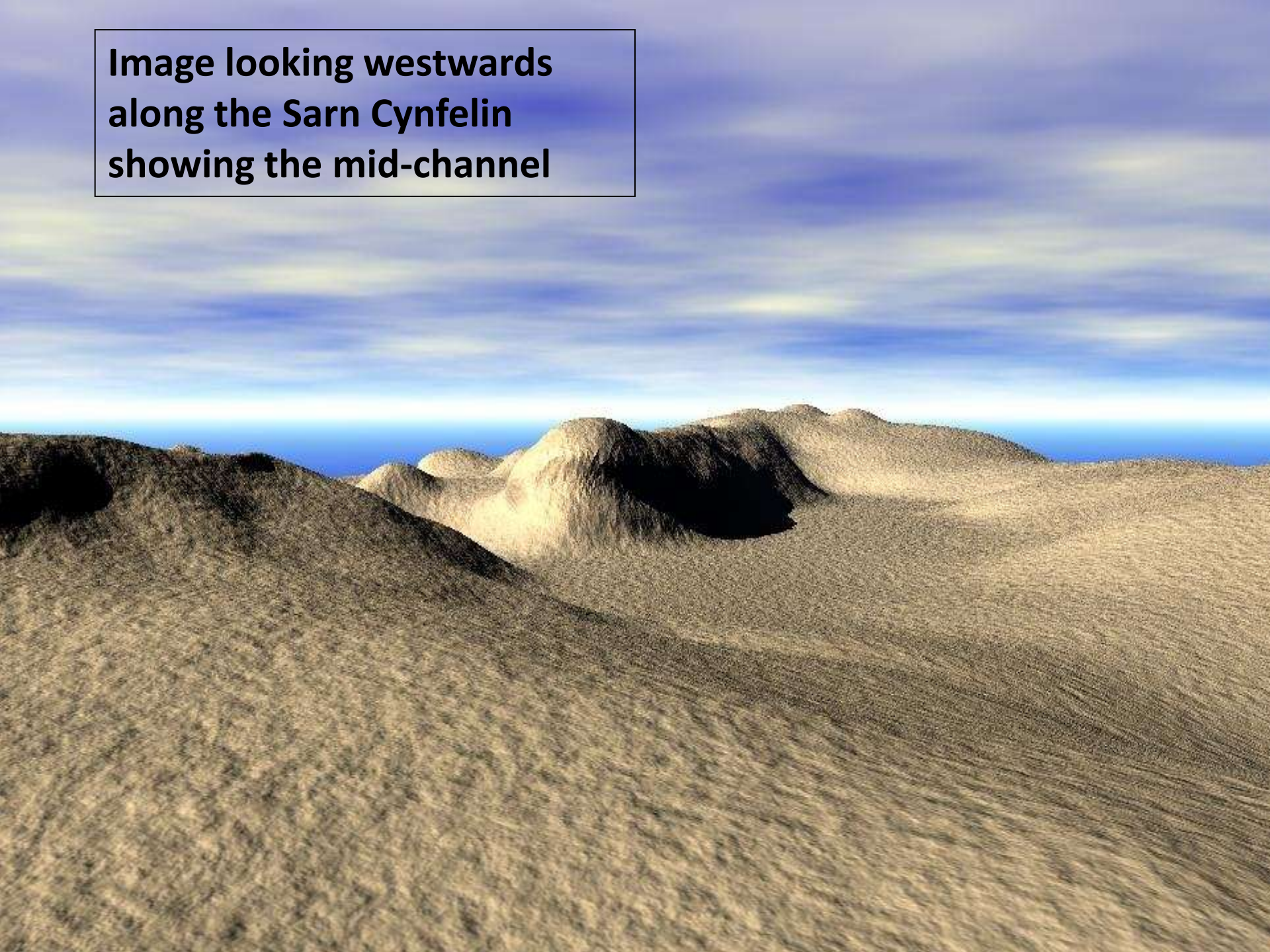
Fig. 6.1 Location Map



Sarn Cynfelyn



**Image looking westwards
along the Sarn Cynfelin
showing the mid-channel**









Scallop Dredging in the Bay

- 2009 – 46 boats operating out of Aberystwyth
- Fishery opened again in 2010
- Fishery due to reopen in March 2011 despite continual calls to keep it closed until an appropriate assessment is conducted.

Government Response

In 2010: -

- **CCW were asked to inform WAG** and commissioned a report from Bangor Uni - early 2010.
- **Report was rushed** due to imminence of fishery opening and legal requirement for assessment
- **Assessment misleading**– looked at small sample area following heavy dredging activity... Conclusion = *species poor*.

Was this done to appropriately assess the impact of dredging on the bay or as an attempt satisfy all parties (while avoiding a hefty fine from Europe)?

- Evidence to suggest Bay is of high importance to cetaceans and their prey species.
- Topographical complexity likely to be related to high biological diversity.
- Bottlenose Dolphins are using Bay to breed and rear young, and there is a resident population.

- Evidence to suggest Bay is of high importance to cetaceans and their prey species.
- **Topographical complexity likely to be related to high biological diversity.**
- Bottlenose Dolphins are using Bay to breed and rear young, and there is a resident population.

- Evidence to suggest Bay is of high importance to cetaceans and their prey species.
- Topographical complexity likely to be related to high biological diversity.
- **Bottlenose Dolphins are using Bay to breed and rear young, and there is a large resident population.**





Marine Conservation Zones

MCZ's proposed for Wales *“giving a high level of protection to a small number of ecologically important sites”*.

Steering Group – provides direction from within government.

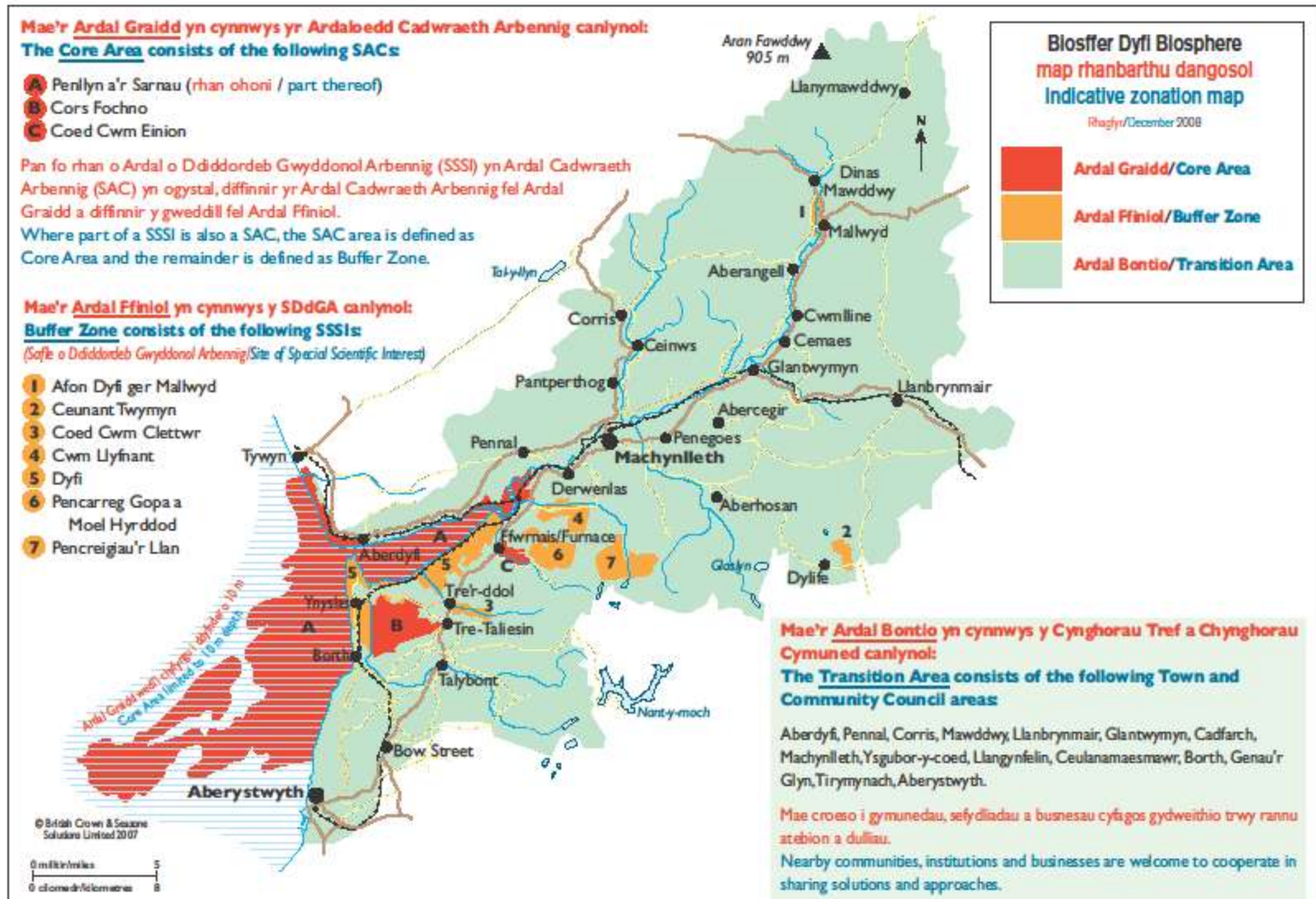
Technical Advisory Group – operational arm; providing expertise and information to steering group.

Stakeholder and citizen engagement group – provides advice to steering group on which stakeholders to engage. Members pre-selected.



Dyfi Biosphere

The Dyfi Biosphere – a different way of thinking about the sea?





©Janet Baxter