

# Making Community Engagement Count on the Coast – the Berwickshire SSMEI

Chris Cutts

Forth Estuary Forum



# General Scottish Sustainable Marine Environment (SSMEI) Objectives

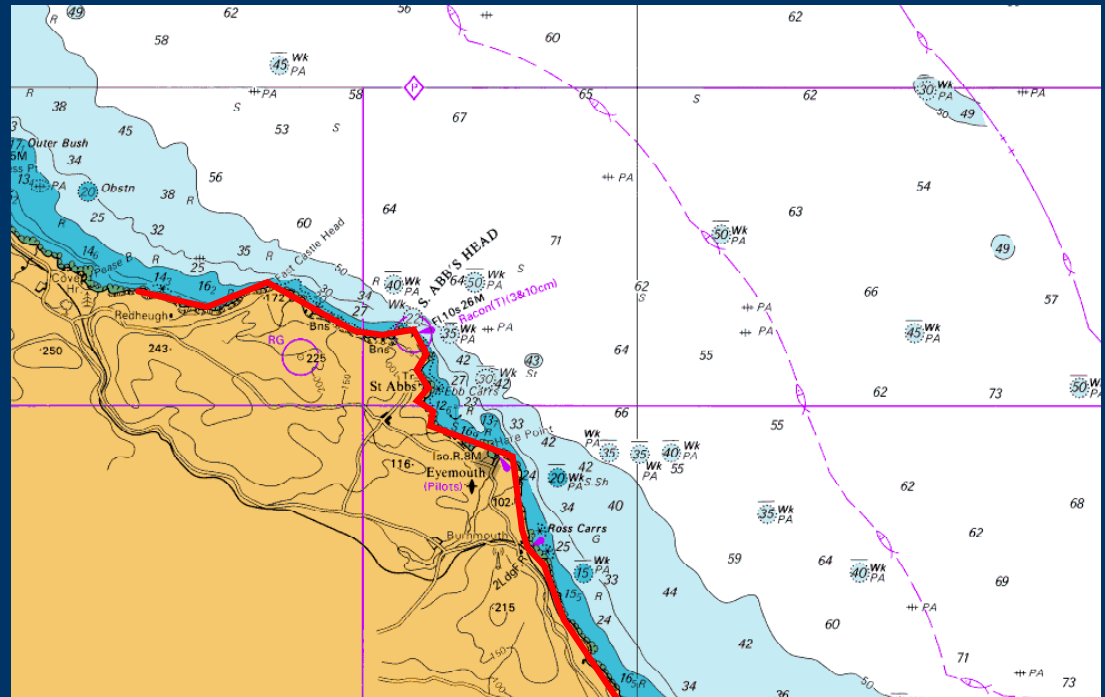
- Promote holistic/integrated approaches to marine and coastal management
- Better integration of existing managers & management instruments
- Increase awareness & appropriate communication between resource users and other stakeholders
- Consistent with international, UK and SE commitments and obligations



# Berwickshire SSMEI Pilot (2006-2009)

## Issues :

- Declining fishing
- Limited opportunity for locals to influence management
- Need to balance local economy with conserving marine & coastal natural heritage
- Lack of promotion of area by tourism initiatives
- Perceived tourist pressures & conflict eg: diver numbers



## Opportunities:

- Sustainability & diversification of fishing industry
- Harbour business diversification
- Diversification of marine use and community influence of management
- Integration of activity management & promotion of tourism



Local issues and opportunities were embedded within general SSMEI objectives by work packages under three initiatives:

**Tourism/Visitor Management**

**Integrated Harbour Management**

**Sustainable Fisheries**



*Berwickshire SSMEI*

**Our Scottish Borders**  
Your inspiration

# Berwickshire Dive Tourism Association

[www.divestabbsseymouth.co.uk](http://www.divestabbsseymouth.co.uk)

**DIVE  
ST ABBS  
EYEMOUTH**

**world class diving close to home**

Discover the stunning Berwickshire coast, home to Scotland's only Voluntary Marine Reserve and some of the best diving Britain has to offer.

[www.divestabbsseymouth.co.uk](http://www.divestabbsseymouth.co.uk)

[www.divestabbsseymouth.co.uk](http://www.divestabbsseymouth.co.uk)



Berwickshire SSMEI

Our Scottish Borders  
Your inspiration

Dive St Abbs and Eyemouth - Microsoft Internet Explorer provided by Scottish Borders Council

File Edit View Favorites Tools Help

Back Forward Stop Home Search Folders Favorites Refresh Print Mail

Address <http://www.divestabbseyemouth.co.uk/#> Go Links

**DIVE** world class diving close to home  
ST ABBS  
EYMOUTH

HOME DIVE WITH US ACCOMMODATION EATING OUT SEE AND DO NEWS ABOUT US CONTACT US LINKS

Search

[Getting Here](#) [Weather & Tides](#)

**LATEST NEWS**

**Divers find German U-Boat**  
FOLLOWING on from previous discoveries divers have now found a World War One U-Boat off the coast  
[More Details >>>](#)

**New book review**  
Dive St Abbs and Eyemouth by Lawson Wood, Underwater World Publications  
[More Details >>>](#)

**WW2 U-Boat found off Eyemouth**

**DIVE CLEAR WATER WRECKS and MARINE RESERVE**

We have been diving the Eyemouth and St Abbs waters since 1995 and have a wealth of dive knowledge and experience. Situated at the heart of Eyemouth harbour we are within striking distance of over 80 wrecks, many of which are unexplored by divers, and the beautiful marine reserve at St Abbs.

**EXPLORE ST ABBS and EYMOUTH**

**LONDON INTERNATIONAL DIVE SHOW** See us at London International Dive Show  
[More Details >>>](#)

**WHERE TO STAY** **FAMILY ACTIVITIES** **GOING OUT**

Wide choice of

**Marine Reserve**  
[More Details >>>](#)

Start | Inboxes - Microsoft Outlook | Dive St Abbs and Eyemo... | Internet | 09:33



Berwickshire SSMEI

Our Scottish Borders  
Your inspiration

# Visitor Management/Integrated Harbour Management

- Berwickshire Dive Tourism Association (BDTA) attended London Dive Show, March '08
- Commendation at Enterprising Britain Awards June 2008
- SSMEI and Scottish Enterprise assisted with a BDTA-organised 'Dive Week';
- Series of events held in August 2008;
- Activities included:
  - Try SCUBA/snorkelling, Water scooters, Film nights, Seafood buffet, Boat trips with guide, Presentations, Seashore safari, Quiz night, raffle;
- Awards for All application to fund Dive Week submitted but rejected;
- SSMEI funded promotional material and distribution.
- Percentage of income from events to be used as BDTA core funding.



Berwickshire SSMEI

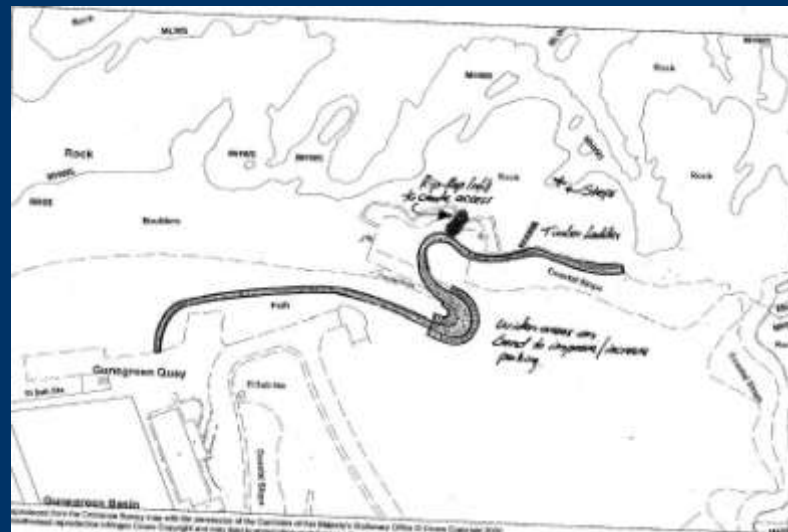
Our Scottish Borders  
Your inspiration



# Visitor Management/Integrated Harbour Management

## Eyemouth shore dive access and pontoon development

- Topographic survey of shore access site carried out
- Preliminary assessment of project carried out by SBC Roads department
- Formal planning permission granted
- pontoons required listed building consent



# Visitor Management/Integrated Harbour Management



- Positive outcome: Trust to modernise;
  - Currently recruiting new members;
- Derricks installed with SSMEI grant;
- Toilets were upgraded to include showers.

- St Abbs parking scheme to improve Harbour Trust income;
- Council car park operated at revised tariff, and evidence of income from summer season was presented to Harbour Trust;
- Added to Harbour Trust car park income, gave estimate of income from both car parks if managed as a single unit;



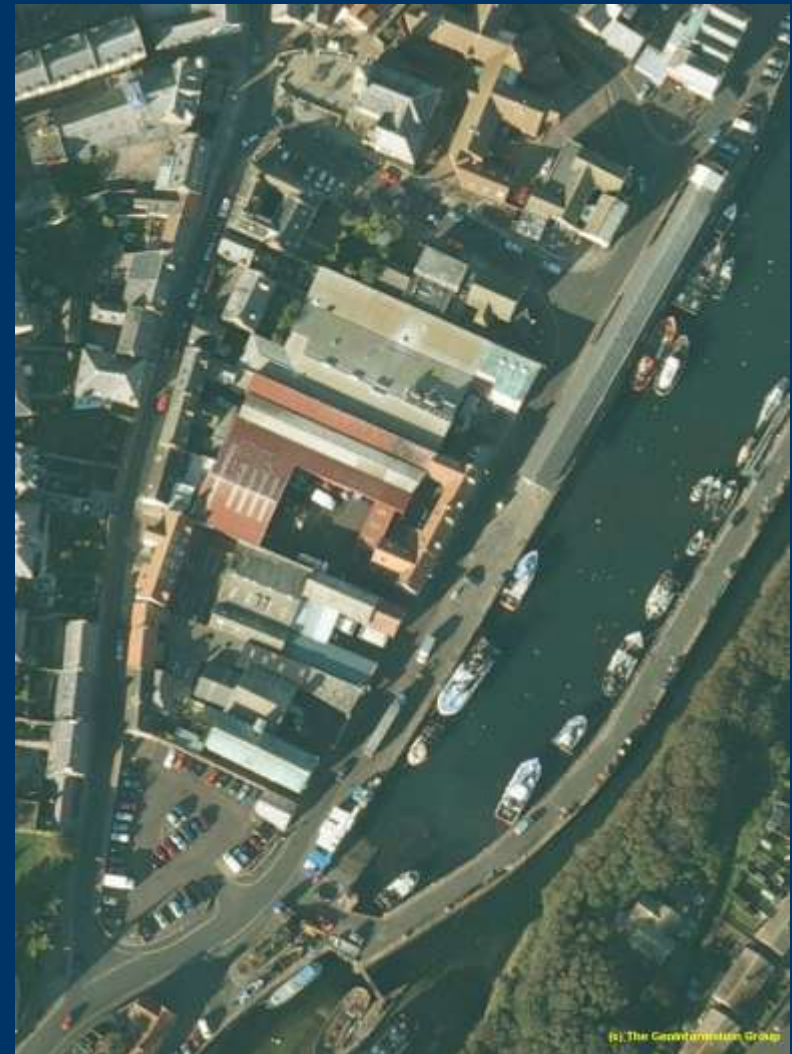
*Berwickshire SSMEI*

**Our Scottish Borders**  
Your inspiration

# Sustainable Fisheries/Harbour Management

## Harbour Road traffic/spatial management

- User conflict and Health & Safety
  - **Short term:** risk assessment & time/motion study complete
  - **Medium term:** changes to traffic management/signage
  - **Long term:** move businesses



# Sustainable Fisheries/Harbour Management



- Available industrial land SE of town with excellent links;
- Held meetings with relevant businesses to elucidate requirements for new seafood park;
- Brief for feasibility / costing / design study assigned to architect consultancy;
- Would rationalise harbour use & free space for leisure/tourism use.



Berwickshire SSMEI

Our Scottish Borders  
Your inspiration

# Sustainable Fisheries/Harbour Management



•The Scope of the Project also entailed the investigation of shared services between the two to three companies who may wish to relocate either in whole or in part, energy and water efficiencies (recirculation technologies for live prawn tanks) and grey water re-use from washing lorry trailers.

•Development of a dedicated seafood industrial park would open up the economic potential of the area to the east of the harbour, de-congest a key area adjacent to the harbour, and free up substantial harbour-side real estate to the west of the harbour which could be developed for visitor/residential development at a key gateway to Eyemouth.

•The Scope of the Project entailed the investigation of the existing processing companies' requirements; the feasibility and implications of the preferred option of a stand-alone building housing refrigerated warehousing, live prawn storage facilities, trailer park space, office accommodation, and residential accommodation.



*Berwickshire SSMEI*

Our Scottish Borders  
Your inspiration



# Sustainable Fisheries/Harbour Management

- Initial costs based on 3,456m<sup>2</sup> building, including loading areas, processing areas, office and accommodation provision;
- Costs for single building can act as a template for additional buildings
  - Draft costs for basic building currently ca. £3m
  - Internal refrigeration and cladding ca. £0.5m
  - 'Fine tuning' of requirements and materials in progress
- Funding options:
  - Processor partners/EFF application
  - LUPS – will require large council involvement and processors buying back properties over several years



*Berwickshire SSMEI*

Our Scottish Borders  
Your inspiration

# Sustainable Fisheries/Harbour Management

- £10,000 of grant offered to Eyemouth Fishermen's Mutual Association:
  - £5k to contribute towards new freezer facilities at the FMA Harbour Road building
    - Will allow sale of prawns during late winter/early spring when fresh landings are low but prices are high
  - £5k towards a live prawn holding facility to contribute to a more sustainable lower volume/higher value local shellfish fishery
- Grant ca. 40%



Berwickshire SSMEI

Our Scottish Borders  
Your inspiration

# Other highlights...

Berwickshire Fishery Report commissioned and produced by Nautilus;

Local socio-economic review of marine environment use produced;

Berwickshire coast Visitor Management Plan produced;

[www.scotborders.gov.uk/ssmei](http://www.scotborders.gov.uk/ssmei)



*Berwickshire SSMEI*

Our Scottish Borders  
Your inspiration



Berwickshire SSMEI

Our Scottish Borders  
Your inspiration