



*Isabel Glasgow*  
*Chair Firth of Clyde Forum*

# Firth of Clyde Forum Area





## Forum History

1993/4: Strathclyde Regional Council: set up the Clyde Estuary Forum, the beginning of integrated coastal zone management for the Clyde

UK Biodiversity Action Plan target of having management plans in place on major estuaries.

1992: Earth Summit Biodiversity agreements.

1998: Clyde Estuary Forum is taken under the banner of SNH's Firth's initiative

2000: Firth of Clyde Forum's Integrated Management Strategy and Action Plan published.



To promote integrated, sustainable management of the Firth of Clyde's environmental, economic and community resources.

Integrated Coastal Zone Management

**ICZM**



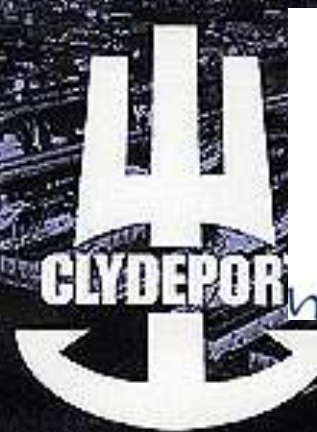
# The Firth of Clyde Forum

A voluntary partnership to care for the Clyde: its environment, its people and its visitors





# Firth of Clyde Forum Partnership



*Working together for our futures*



GLASGOW & THE CLYDE VALLEY  
**STRUCTURE PLAN**  
JOINT COMMITTEE





# Forum Membership

- Website: [www.clydeforum.org](http://www.clydeforum.org)
- Newsletter: Clyde Breakers
- Annual conference
- Information events
- Advice/liaison/networking

*Isle of Cumbrae*

# Clyde Breakers



FIRTH OF CLYDE NEWSLETTER

Issue 4

March 2005

## Firth of Clyde Forum Annual Conference

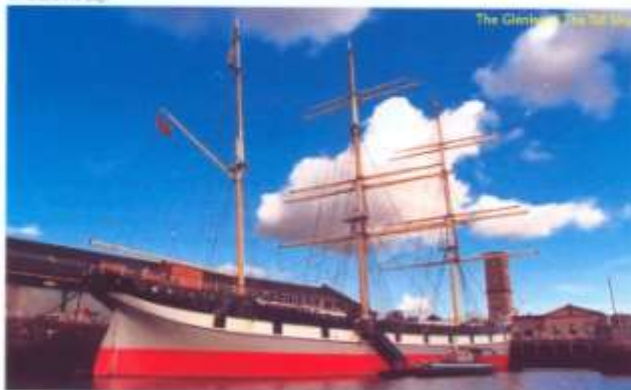
### Transport in the Firth of Clyde: Is Integration Possible?

The Firth of Clyde Forum held its annual conference on the Tall Ship in Glasgow on 12<sup>th</sup> November last year. The event focused on integrated transport in the Firth of Clyde and was attended by over 100 people from local authorities, businesses, boat operators, enterprise bodies, environmental organisations and interested members of the public.

The venue was, despite some logistical issues, overall a great place to hold the event. Being on a historic vessel looking the future of transport on the Clyde gave the event a real inspirational feeling. It certainly generated a great deal of press interest with coverage on Reporting Scotland, BBC Scotland's Out of Doors program and articles appearing in the Glasgow Herald and several local newspapers.

We were very lucky to secure a wide range of speakers. We had presentations on historic transport on the Clyde from Emily Malcolm, Glasgow Museum of Transport and on strategic transport plans from Strathclyde Passenger Transport and from the West of Scotland Transport Partnership (WESTRANS). Following that we moved onto river transport with presentations from Dr Harold Mills, Chairman of Caledonian MacBrayne Ltd who spoke about how CalMac are working to connect Clyde communities. Dr Alfred Bland, Head of the Maritime Research Group at Napier University's Transport Research Institute (TRI) outlined his Clyde Waterfront Ferry Study which, based on analysis of other

Continued over page



#### Firth of Clyde Forum Update

Since our last edition in November 2004, work has continued to be done. This edition contains articles about our successful annual conference which featured an integrated transport in the Firth of Clyde, an update of forthcoming Forum sessions, a partner focus on the Scottish Environment Protection Agency (SEPA) and articles about the Clyde archaeology survey, beach cleaning projects in the Clyde, diving and marine wildlife amongst others.

The FoCF has also been busy discussing future plans for the Forum in particular liaison with the Clyde Plus Project which is part of the Scottish Sustainable Marine Environment Initiative (SMSEI). More details in the update inside.

We hope you find the articles here interesting. Please feel free to send any comments for improvements or contributions for the next edition. Many thanks to those of you who contributed this time round. All articles are much appreciated. Please let us know also any suggestions you have for the work of the Firth of Clyde Forum.

#### Best wishes,

Jill MacPherson,  
Firth of Clyde Forum Project Officer  
and Social Glasgow, Firth of Clyde  
Forum Chair

#### Inside

What's On Update	2
Clyde Fisheries Project Update	3
Clyde Plus Project Update	3
Caring around the Firth of Clyde	4
Clyde Archaeological Survey	4
Continuous Voluntary Beach Clean	5
Partner Focus - SEPA News	5
Wildlife in the Firth of Clyde	8
Scottish Coastal Forum Update	13
Environmentally Friendly Sailing	13
The Crown Estate Update	14
Beyond the Firth of Clyde	15



Annual Conference 2007

# The Firth of Clyde: A Destination to Enjoy!

Glasgow City Chambers, 7<sup>th</sup> November 2007





# Information Events

‘Facing up to the Clyde’s Climate Future’

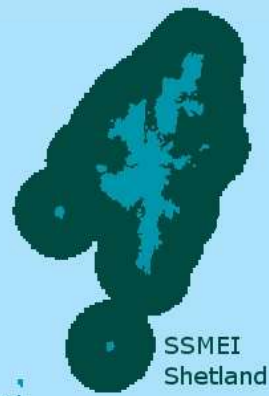
Aquaculture and the Firth of Clyde’

– Inverary



# Kintyre Marine Awareness Weekend-Firth of Clyde Forum and Argyll and Bute Beach Forum





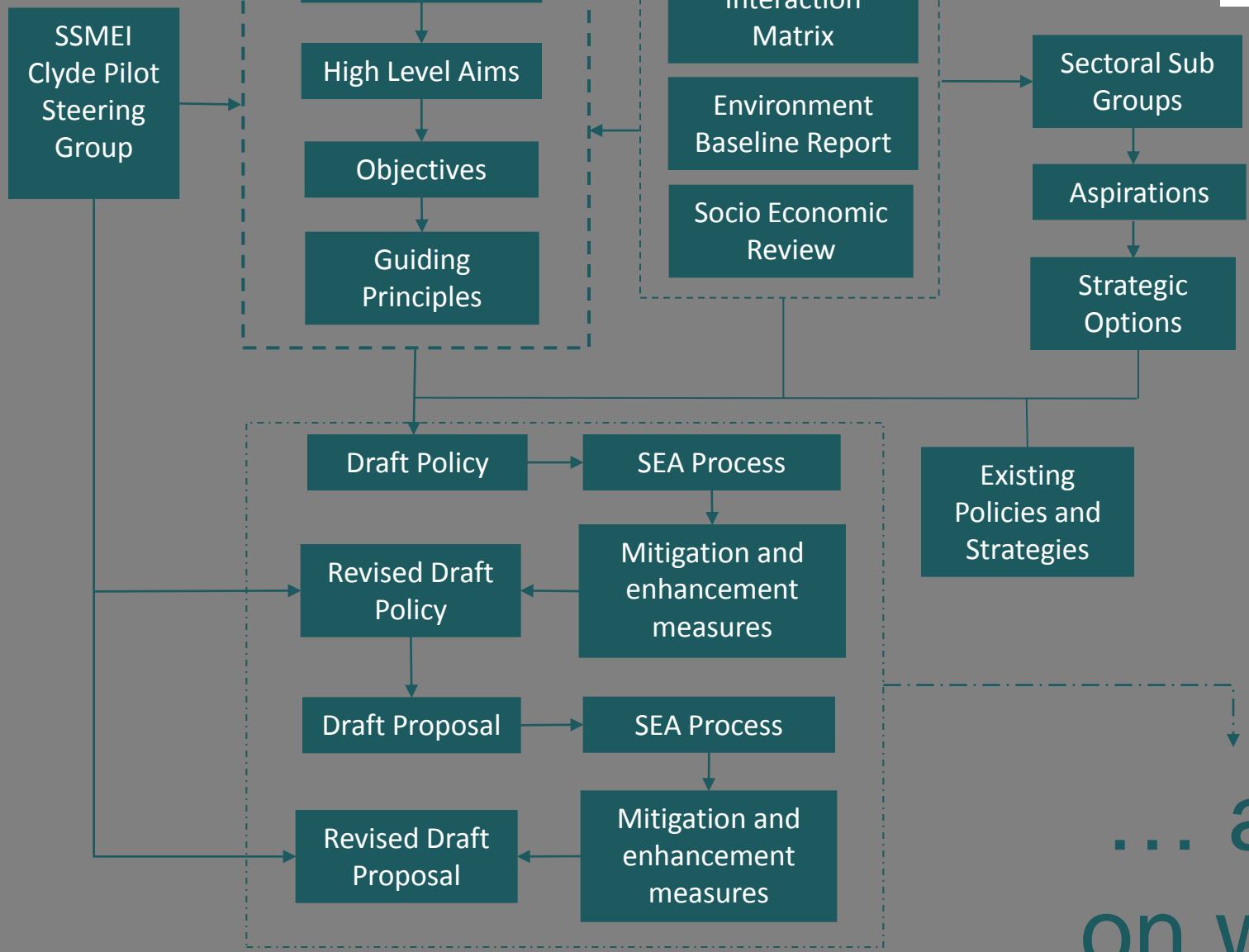
## *Scottish Sustainable Marine Environment Initiative*

Instigated by the Scottish  
Government in 2002

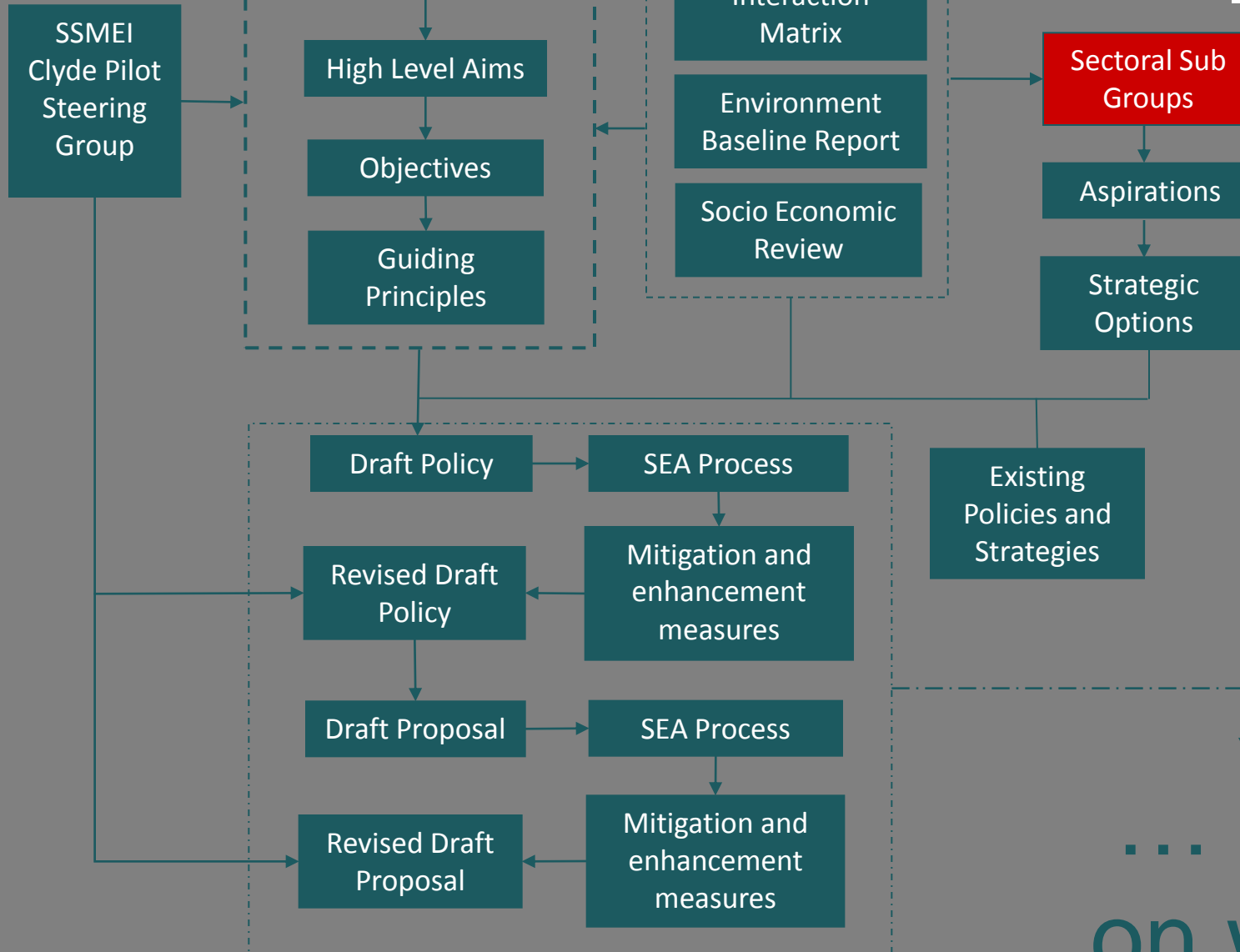
Pilot Project areas:

- Shetland
- Sound of Mull
- Clyde Pilot
- Berwickshire

Testing new approaches to  
sustainable management of  
Scotland's seas



... and on with



... and  
on with

# Sectoral Groups included:

Representatives from each of the following sectors

- Environment
- Fisheries
- Aquaculture
- Recreation
- Tourism
- Energy
- Shipping and Transport
- Waste treatment

# Simplified (perceived) interaction matrix



	Renewable Energy	Subsea cables & pipelines	Inshore Fisheries	Aquaculture	Shipping & Transport	Ports & Harbours	Tourism
Renewable Energy		Competition	Competition	Neutral	Conflict	Competition	Competition
Subsea cables & pipelines	Neutral		Competition	Neutral	Neutral	Competition	Neutral
Inshore fisheries	Neutral			Neutral	Competition		Neutral
Aquaculture	Neutral		Incompatible		Competition	Neutral	Neutral
Shipping & transport	Competition		Competition	Neutral		Positive	Competition

An example of some sectors examined within the matrix

- Sectors were divided into subsectors (not shown here)

- Interactions classified as either:

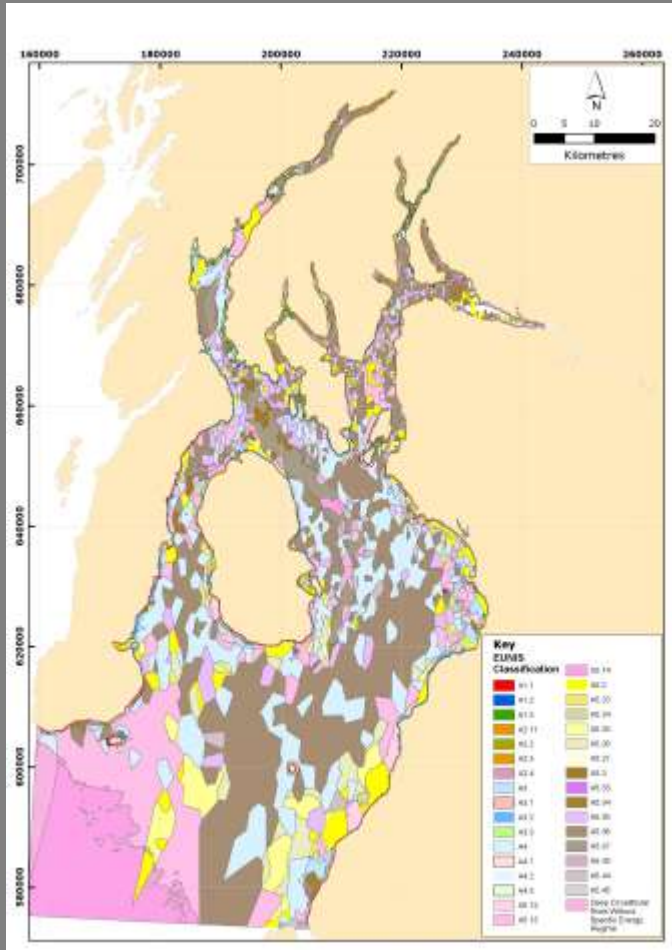
Positive – beneficial for both parties

Competition – both parties can use the same space

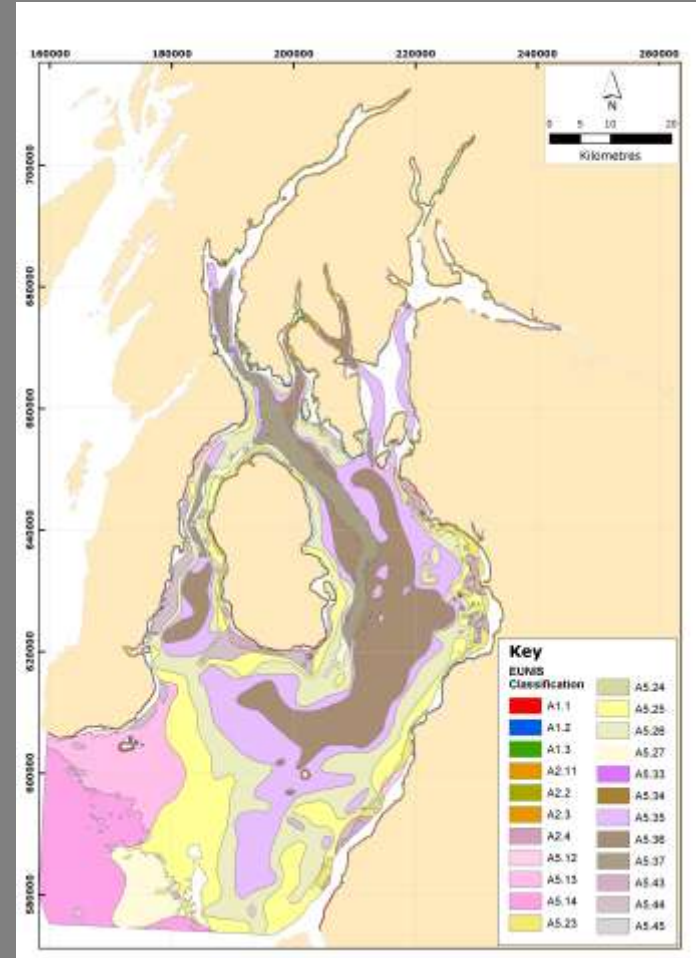
Conflict – conflict of interests for both parties to use the same space.



# Data issues.....



Seazone Dataset



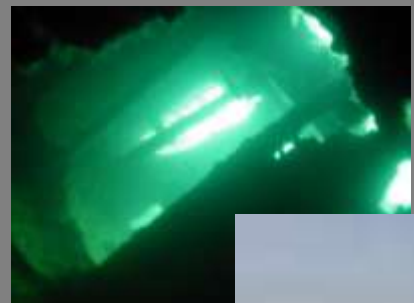
BGS Dataset

# Policies arising from M.S.P.



No.	Policy	Proposal	Potential Partners	Target Delivery
1	ENV1	Develop a strategy for the coordinated gathering and recording of data in the Firth of Clyde	FoCF SNH SEPA Marine Scotland	2011
5	ENV4	Develop a suite of pressure/ sensitivity indicators	SNH SEPA Marine Scotland	2011
8	ENV10	Carry out a seascape/landscape analysis of the Firth of Clyde	SNH Planning Authorities	2011
10	ENV11	Develop a coordinated marine litter strategy for the Firth of Clyde	FoCF SNH SEPA Local Authorities Marine Scotland	2014

# Thank you





Ailsa Caig



